

When laborers dialogue about LPG in Essex, they by and large start with the purposeful stuff. The belongings will possibly not have mains gas, the boiler upgrade is timed with a maintenance, or a burger van desires legit warmth that does not rely on a delicate offer chain. Whatever the intent, LPG works neatly, however in simple terms when the installing is accomplished exact and the continuing exams are handled as section of the process, no longer an afterthought.

I actually have spent years handling LPG cylinder setups, call outs for Boiler Breakdown Essex, and maintenance that turned out to be much less about the boiler itself and more about the furnish. A "small" challenge like a regulator that just isn't matched, pipework that is run in the fallacious region, or a shut-off valve buried behind boxing can transform repeated downtime. The important information is that once LPG is installed with the correct frame of mind, cylinders are riskless to keep, power is secure, and home equipment behave as they should.

LPG within the Essex environment: why the fundamentals matter

Essex residences are a mix of older housing inventory, fashionable builds, and business web sites with very other ventilation realities. Some buildings choose an LPG boiler on account that it truly is the simply life like possibility. Some groups, from kitchens to heating plant rooms, depend upon LPG on account that they desire output they'll count on.

The true change from mains fuel will never be that LPG is "worse". It is that it behaves differently, and its deploy has its own priorities: cylinder positioning, regulator option, ideal pipe sizing, reliable routing, leak detection area, and transparent documentation.

In observe, LPG complications continuously appear to be boiler troubles. A tenant reviews that the burner "cuts out". A home owner says the boiler "ignites for a moment then stops". A advertisement operator tells you the oven comes up to temperature slowly, then struggles when two home equipment run jointly. Sometimes the boiler is sincerely faulty. More pretty much, the basis reason is within the gas offer edge: tension drop, an undersized run, an obstructed flue quandary causing safe practices shutdown, or a valve association that limits circulation.

That is why risk-free cylinders, smart pipework layout, and compliance usually are not become independent from functionality. They are functionality.

Cylinder garage: extra than "placed it backyard and wish"

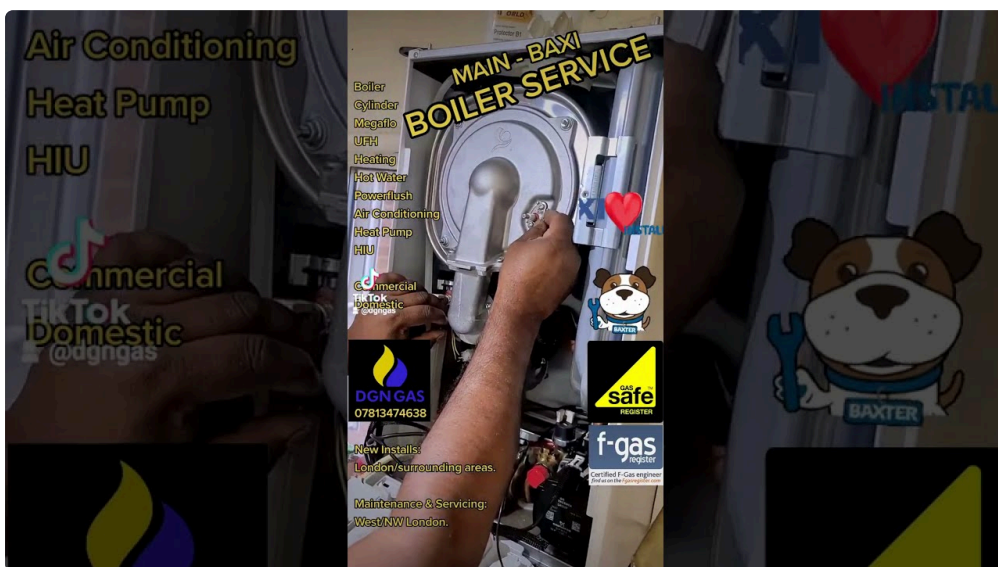
LPG cylinder install starts offevolved with the place the cylinders go and how they may be treated. I have viewed terrific intentions create dangerous setups, regularly as a result of the user doing the work prioritised convenience over containment and access.

15 tips on a service



Cylinders need actual safeguard from affect, top air flow round the cylinder field, nontoxic separation from ignition assets wherein viable, and clear entry for inspection and replacement. The cylinder position must always additionally make it simpler to service with out attaining by using awkward limitations or standing in a constrained nook at the same time as valves are being grew to become.

One element that catches humans out is the distinction between "outside" and "really ventilated". A cylinder tucked behind a fence line, within a partially blocked alcove, or positioned wherein shrubs develop up into it is going to create conditions that are usually not most desirable. If you ever odor gas, even faintly, you desire the capability to behave speedy, not to seek for tools at the back of cladding.



Another established predicament in older Essex residences is cylinder placement too on the brink of constructing qualities that complicate repairs. If a regulator swap will become a chore, any one will delay it. Delays are how small defects changed into better incidents.

The intention is understated: cylinders will have to be stored in a means that helps safe operation now and protected protection later.



A useful observe from the field

On one set up I attended, the cylinder used to be thoroughly sized and the boiler became the precise form, but the cylinder cabinet door turned into deliberately left stiff, given that the property owner "did not need drafts". The door turned into in part sealing the house around the regulator, and airflow became thoroughly confined. The boiler begun reliably on day one. It grew to be inconsistent once out of doors temperatures shifted, considering the fact that the delivery conditions had been not sturdy.

It did no longer take anything else exotic to restoration. We adjusted the garage setup so ventilation was restored and access remained dependable. After that, the boiler behaved like a boiler, not like a thriller.

Regulators and changeover: sturdy stress is the quiet hero

With LPG, regulators and changeover structures are the place you could possibly both lock in steadiness or introduce irritating variation. A perfect regulator variety is dependent at the equipment call for, the cylinder configuration, and how the method is intended to run through the years.

For single-cylinder setups, the regulator has to in shape the predicted demand stove and continue to be riskless because the cylinder output adjustments. For multi-cylinder setups, changeover methods desire to exchange easily, and the manage association should be installation effectively so force does now not dip whilst a cylinder alternative takes place.

The cylinder regulator also is where you locate the temptation to "make it paintings" with an improvised element, or to reuse an ancient regulator since it appears to be like exceptional. Visually, a regulator can happen intact at the same time inside efficiency is degraded. The end result may also be intermittent faults that mimic burner ignition complications or rationale flame stability concerns.

If you might be comparing prices, do not just ask who materials the cylinder. Ask who's matching the regulator and configuration to the equipment load and unquestionably deploy stipulations. That is the distinction between reliable warmth and repeated call outs.

Pipework design: wherein set up first-class shows up later

LPG pipework isn't very in basic terms approximately routing gasoline correctly from factor A to level B. It is about ensuring the device keeps enough drift, minimising regulations, and masking pipe runs from destroy

and contamination.

When pipework is incorrectly sized or prepared poorly, that you would be able to get tension drop underneath load. That mostly presentations up as:

- delayed heat-up,
- burner instability,
- nuisance lockouts,
- and court cases that the boiler "works, but now not competently".

On the opposite hand, overcomplicated pipe runs, needless bends, or bad access for isolation valves also reason complications throughout repairs. In an Essex assets, the boiler maybe boxed in, and the cylinder discipline shall be across an outdoor lean-to. If the pipework does no longer have brilliant isolation factors, a minor fault can changed into an entire-day job due to the fact the formulation should not be remoted cleanly.

A sturdy deploy treats isolation valves and inspection elements as a part of the design, not as an afterthought. It additionally thinks approximately corrosion resistance, protection wherein pipes can be struck, and separation from negative aspects. LPG is heavier than air, which suggests vapour can collect in low spots if a leak occurs. Pipe routing and termination points subsequently count number.

What I search for in the pipe run

When I look at LPG installations, I pay close realization to how the pipework is supported and where it is probably exposed to knocks. I also cost that the pipe structure makes it attainable to service regulators and appliances devoid of improvising or dismantling structural elements. If isolations are buried in the back of plasterboard, you're growing future threat and destiny delay.

Ventilation and flues: LPG ties rapidly into safety

Even regardless that this piece is concentrated on cylinders and pipework, I can't ignore ventilation and flue overall performance. LPG appliances desire nontoxic combustion situations. An set up that meets the fuel side requirements but fails on flue routing or termination can cause shutdowns and repeated faults.

People customarily expect that if the boiler "starts offevolved", ventilation is high-quality. Not always. Some faults basically prove up less than unique situations, like wind route modifications, chilly climate, or while the room air is surprisingly heat or stale.

In commercial websites, air flow shall be a relocating goal. Kitchens get extract procedures adjusted for relief. Staff block vents in winter. Temporary signage will get stuck to grilles. A Gas safety check in that surroundings wishes to be extra universal, considering that the setting transformations.

If you've an appliance like a gas fire or a gas cooker, the similar concept applies. Gas Fire Service Essex and Gas Fire Installation Essex don't seem to be with regards to the flame. They are about dependable combustion, best suited connections, and dependable operation within the house where the appliance sits.

Compliance and bureaucracy: the component of us forget about till there is a problem

Compliance isn't really a work of paper for the document. It is a manner to reveal that the installation has been assessed and established to a dependable widespread, with the properly checks finished and recorded.

In the United Kingdom, LPG installations need to be performed by a qualified, reliable, and ongoing gas safeguard certificate Essex necessities may want to be taken care of as activities. For landlords and agencies, this becomes section of the operational rhythm. For householders, it nonetheless things, due to the fact gas safety checks are the earliest warning manner for deterioration, put on, or accidental spoil.

When I attend a breakdown, the primary query I ask is continuously much less "what failed?" and more "what become ultimate checked and recorded?". A neatly-maintained system displays traits. A ignored one hides problems till they transform urgent.

A exact Gas Safety Check Essex visit needs to include greater than a swift look. It need to disguise dependable operation of the equipment, verification of combustion parameters the place suited, assessments for leaks where crucial, and affirmation that the deploy remains are compatible for cause.

If your LPG setup contains pipework changes, new home equipment, or regulator replacements, the documentation need to replicate the paintings and the outcome of any required checks.

Troubleshooting authentic-international LPG trouble (those that scouse borrow a while)

Every process teaches you something, but breakdown styles repeat. I retailer a mental list of the maximum familiar "LPG blamed the boiler" situations, on the grounds that they convey up repeatedly across houses, landlord homes, and industrial contraptions.

Here are the varieties of trouble that in many instances get suggested as boiler worries, however are in truth installing or deliver troubles:

- provide drive adaptation from regulator mismatch or cylinder changeover faults
- pipework restrictions or incorrect sizing most advantageous to power drop underneath demand
- isolation or valves that usually are not successfully configured, at times after earlier service visits
- flue and combustion issues masked by means of symptom timing, chiefly with climate changes
- hidden destroy to pipe runs due to the get entry to work round the property

To be transparent, boilers do fail. I have repaired and replaced parts various occasions, including paintings that required perfect analysis and parts. But if the supply part is incorrect, repairs purely purchase you brief-time period comfort.

A brief tale from a boiler breakdown call

A landlord in Essex contacted me seeing that a Boiler Repair Essex thing kept repeating. The boiler might run for some time, then shut down. Each time, the thermostat and handle settings were checked. Each time, it "nearly" behaved. The trend turned into regular: signs and symptoms worsened when multiple heating cycles were induced near jointly.

On inspection, the furnish situations have been volatile in the course of excessive call for. The pipe run have been changed up to now, with a change that created an triumphant restriction. Once we corrected the arrangement and made yes the regulator and setup matched the burden good, the boiler stopped performing find it irresistible had a temperament. That is the instant where you be told no longer to chase the symptom.

Power flush and the knock-on consequences for LPG boilers

Many house owners and landlords point of interest on the cylinder and the pipework, and they're appropriate to achieve this. But if the manner is omitted, the boiler can still battle.

When an LPG boiler is hooked up into an older heating components, sludge or trapped debris can affect stream and warmth move. That can lead to bad overall performance, cycling, and in some cases untimely put on. In the Essex edge, I ordinarily see vintage radiators, mixed pipe components, and lengthy intervals devoid of meaningful maintenance.

That is the place Power flush Essex work can develop into appropriate. A correct system sparkling until now commission can curb disorders later, exceedingly when the boiler is changing an [Power Flush Essex](#) older unit or when there may be common approach historical past.

The change-off is scheduling and charge. A strength flush isn't always regularly necessary in each challenge. It relies upon on the circumstance of the present machine, how effectively it drains, whether there may be evidence of sludge, and what the company and formulation layout suggest. The first-rate means is to check and make a decision structured on what is as a matter of fact there, now not on a blanket assumption.

What a superb LPG deploy looks like from start to finish

If you might be planning a brand new LPG formula, you would like readability about what will be achieved and why. A useful LPG installer ought to have the option to talk thru cylinder area, regulator setup, pipework routing, appliance connection, and the checks that prove it's far safe.

Here is what that almost always seems like in a practical, on-web site feel:

- website online evaluation for cylinder storage, ventilation, and riskless access
- pipework layout for routing, improve, and really apt isolation points
- best regulator and, if vital, changeover setup matched to demand
- equipment commissioning with safe practices checks and leak trying out discipline
- transparent handover, including the place to uncover isolators and what history to keep

If any portion of this is rushed, or if the installer won't be able to give an explanation for the logic behind the setup, it is a red flag. LPG isn't always the place to guess.

Commercial LPG: cylinders, kitchens, and the "two appliances promptly" problem

Commercial setups upload power to the schedule and complexity to the security concerns. A burger van gas association, as an example, has to arrange cooking masses, area constraints, quick turnaround, and usual action around home equipment. Even in case you don't seem to be with the aid of an LPG boiler for area heating, you might be nevertheless coping with gas safeguard concepts: most excellent connections, steady grant, riskless routing, and disciplined testing.

I actually have noticeable issues in which the provide facet became great whilst one equipment ran, however failed while two demands hit jointly. It is a conventional situation, specially while usage styles are seasonal or when staff alternate how system is operated.

For business customers, the "excellent" installation is person who anticipates top load and keeps shutdown routine infrequent. That is likewise in which documentation and ordinary gas defense certificate Essex

arrangements remember, simply because compliance is element of how the enterprise stays open.

Maintenance behavior that keep issues in the next bloodless snap

Once set up, an LPG device is absolutely not supposed to be forgotten. You do no longer want to deal with it like a top-repairs passion, but you may want to construct straight forward habits.

The first is listening and noticing. If ignition sounds switch, if burning becomes noisier, or if shutdown movements jump performing out of trend, it's well worth investigating rather than anticipating a full failure. LPG structures can demonstrate early indicators prior to they cease operating fully.

The moment dependancy is keeping the cylinder location accessible and respectful of clearance. Do not box in get right of entry to doorways completely. Do no longer pile presents near regulator vents. Keep shrubs trimmed and do no longer let covers to create stagnant air wallet.

The 3rd is scheduling official Boiler Service Essex or Gas Fire Service Essex at awesome intervals, based on utilization and equipment form. Regular provider is wherein defense tests end up predictable, no longer dramatic.

Related expertise folks repeatedly package with LPG work in Essex

Most clients do not plan their abode upgrades in neat classes. If you're upgrading heating or adding a fuel equipment, chances are you'll also be coping with wider plumbing and ventilation wishes.

In Essex, many clients touch us for broader Plumbing Essex jobs along Boiler Installation Essex work. Some also ask approximately Power flush Essex cure as section of getting the procedure well prepared for a new boiler. Others are also making plans Aircon Essex or Air Conditioning Essex improvements, since convenience necessities shift throughout seasons. It is customary to choose one relied on crew which will coordinate work rather than having separate contractors overlapping without communication.

The key element is coordination. Gas and plumbing ameliorations can have an impact on pipe runs, get entry to routes, and the setting round home equipment. A awesome installer thinks forward.

Choosing who to call in Essex for LPG installations and ongoing safety

If you're are searching for an LPG installer, or you might be handling a ordinary Boiler Breakdown Essex issue, attention on the potential to diagnose correctly and accomplished the process appropriately.

A powerful engineer should still ask questions about cylinder association, equipment load, any past variations to pipework, and how the gadget has been behaving. They have to be gentle explaining what they will do and what results they predict from commissioning and trying out.

If you prefer ongoing confidence, you will have to also be fascinated by Gas safeguard certificates Essex necessities once you are a landlord or trade operator. And for house owners who're absolutely bored with unreliable heating, deal with familiar assessments as a realistic manner to prevent the heart-of-winter scramble.

Safe LPG setting up is a mixture of careful cylinder dealing with, desirable regulator and pipework layout, and discipline all over commissioning and servicing. Done top, LPG behaves predictably, and also you spend less time chasing faults that not ever ought to have befall within the first area. Done poorly, it is going to turn

hobbies call for into repeated breakdowns. In Essex, the change is sort of regularly the related, smart judgment on web page, and the excellent assessments carried out good.