

If you participate in magic lengthy ample, you begin to observe a trend. The “trick” infrequently works in isolation. It works as a result of your arms are warm, your timing is constant, your props are ready, and your presentation seems uncomplicated even in the event you are juggling tips behind the curtain.

That is the place a good magic store earns its retain. Not the established type you browse as soon as, however the magic retailer UK performers go back to for the small add-ons that quietly eradicate friction from each and every overall performance. A thumb tip that seats reliably. A gimmicked coin that doesn't glare underneath degree lighting fixtures. A prop bag that basically protects what you paid for. Even the mundane issues, like gloves that don't snag or a reel that never kinks, emerge as shaping how self-assured you believe onstage.

Below is a pragmatic, performer-first assist to the equipment that make the largest change, chiefly in the event you retailer as a result of a magic trick save and choose your kit to feel intentional, now not patched jointly.

## The accent frame of mind: buy for reliability, now not novelty

A lot of props appear exciting on a desk. Then you take them to a gig and truth presentations up. Your venue lighting fixtures is harsher. Your fit jacket is totally different. The target market is nearer than the advertising and marketing footage urged. You bump a pocket, you sweat, you drop a small object, you reach for a specific thing and it sticks to cloth.



The best equipment are the ones that behave the equal manner each time. That capability:

- predictable dealing with (nothing slides or snags swiftly)
- dependable concealment (no awkward gaps)
- consistent fabric high quality (elastic doesn't degrade without delay, adhesives don't cross greasy)
- delivery defense (props arrive inside the related situation you left them)

When I all started construction my equipment, I made the vintage mistake of buying gimmicks that had been “intended” to work flawlessly, then learning they had been touchy to humidity, lights, or the precise manufacturer of glue used within the product. The distinction among a decent accent and a nice one is regularly much less about the formula and more about the build.

So whereas a magic keep could have all the pieces from novelty presents to pro-grade equipment, the equipment value your money are the ones that scale down your workload throughout performance.

## **Small props that amend everything: palms, pockets, and comfort**

Your fingers are your level. If your fingertips sense flawed, your coping with will reveal it. This is the place gloves, fingertip covers, and grip aids be counted more than most rookies anticipate.

For instance, fingertip grips and soft covering accessories can solve two long-established complications directly: they increase handle over slippery units and that they forestall your palms from sticking to gimmicked surfaces. If you might be doing coin work, ball vanishes, or some thing that entails repeated thumb and finger moves, you wish add-ons that stay pleased over a complete set, now not just by using the 1st 30 minutes of exercise.

Gloves are the related tale. Some performers love fingerless gloves given that they take care of dexterity at the same time as lowering friction. Others go for thin, smooth elements since they seem to be "invisible" even as still controlling sweat and grip. The exchange-off is breathability. If you operate in heat venues, a glove that feels very best inside the observe room can turn out to be distracting by way of the second act.

In my possess equipment, I continue two glove styles for different situations. One is for near-up and gallery work where viewers proximity punishes bulky textures. The other is for degree-heavy units wherein remedy concerns greater than best possible dermis mimicry.

When you keep a magic trick store, don't simply assess even if an item exists, verify no matter if this is designed for performer wear. That recurrently way textile, sizing alternate options, and clarity about intended use.

## **The "pocket engineering" components every performer finally ends up needing**

Pocket management sounds boring, till you pass over a beat onstage on the grounds that something migrated. A precise accent can turn a harmful series into a comfortable one.

Look for items that assist with company and retention. Prop organizers, pocket sachets, and compact garage treatments save your gear from becoming a jumbled bag of surprises. The nice performers do now not just have strong suggestions, they've got true logistics.

A few tips make a surprising big difference:

- If you operate jackets with varied wallet, you would like add-ons that behave persistently in every one pocket length.
- If you trip, you need inserts or protecting wraps to forestall props from scuffing or creasing.
- If your teach entails fast transitions, you would like pieces which you could attain devoid of browsing.

In a magic shop UK, you can quite often to find storage recommendations aimed at performers, not just customers. Those are worthy paying attention to, due to the fact that they recognize what your fingers do mid-routine.

## **Quick gear look at various for strong transitions**

Before your subsequent gig, do a no-efficiency practice session where you only go props and contact wallet. No patter, no trick series. Just attain, retrieve, and update gifts except your muscle memory is doing the work.

If you desire a hassle-free record that suits in your computing device, right here this is:

- Make convinced every prop returns to the exact equal spot inside the equal pocket whenever
- Test managing lower than the lighting you could basically carry out in
- Confirm your props tolerate sweat with no growing sticky or slippery
- Pack fragile gadgets with padding, now not only a "slot" in a bag
- Practice one transition except you are able to do it blind (shut your eyes and believe)

That small training has kept me from awkward moments greater than once.

## **Coin and card work equipment: what performers obsess over**

Coins and cards are in which a variety of performers spend true time, and the add-ons right here are the change between "appears to be like top notch" and "basically works."

For coins, the most important accessory classes are surfaces and controls. Specialty coin clips, coin shells, and replacement cash can amend the total visible result, specifically beneath stage lighting. Some coins exhibit edges more than others, some glare, and a few suppose heavier or quieter than you count on. If you've ever heard your own coin "click" louder than it ought to, you recognize that sound incorporates.

Cards are identical. The equipment that rely maximum are things that look after dealing with and functionality aesthetics. That can include card sleeves, gimmicked decks, or efficiency-grade card instances that stay away from bending, warping, and scuffs. If a deck will get even reasonably warped, convinced sleights changed into more durable, and your self assurance drops swifter than you suspect.

A magic trick shop is a superb vicinity to find "performer targeted" editions of those resources, considering that they are typically equipped for repeat use. But you continue to have got to event the object on your strategy.

Here is a rule of thumb I have confidence: in the event you alternate the software, do not count on you could retain the comparable dealing with without adjustment. Even small differences in weight, texture, or stiffness can drive new finger force styles. That is why accessories must be dealt with like component to the movements, not like ornament.

## **Rope, silk, and textile components: the invisible work**

Fabrics are appealing on stage, yet they're picky. The components you employ round silks, ropes, and gimmicked cloth straight away impact stream, visibility, and reset speed.

For silk-stylish paintings, you choose cloth that behaves predictably. Some silks appearance ultimate in daylight and then demonstrate themselves less than bright level lighting owing to sheen or thinness. Others consider mushy yet snag on earrings, fingertips, or dress seams. Quality add-ons here are about consistency.

Storage subjects too. If you fold a silk too sharply, it holds creases that pop visually at the worst times. A protective wrap and a gentle folding hobbies can store your presentation devoid of converting the trick.

Rope paintings has its own problems. Ropes that tangle effortlessly are the enemy of fresh pacing. If you operate sleeves, gimmicked rope tactics, or really expert bins, they ought to reinforce a quick reset and a legitimate elevate. A magic keep UK that supports performers probably has accent storage developed for ropes and fabric, no longer just widely wide-spread baggage.

One small aspect that is simple to miss: what your costume does to material. If your cuff seam catches on material or your jacket lining grabs friction aspects, your "accent" may absolutely be your dress construction. If you operate incessantly, you ultimately become customizing your outfits the same manner you customize your props.

## Thumb assistance, covers, and concealment accessories

Concealment add-ons are the quiet spine of many near-up exercises. Thumb ideas, finger covers, and utility sleeves all fall into this type.

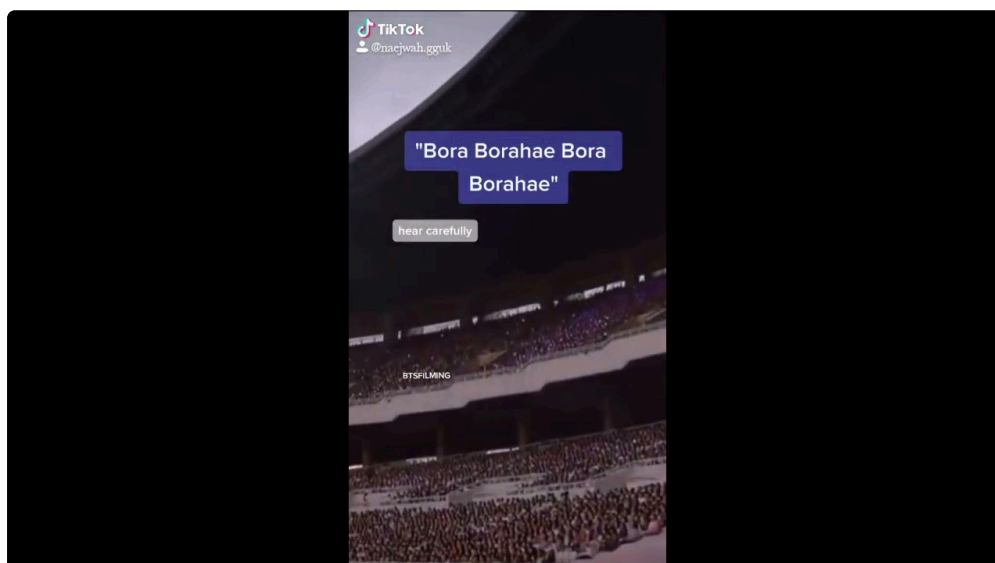
The alternative isn't handiest approximately no matter if they match. It is set how they move, how they tolerate repeated use, and how they look in movement. A thumb tip that looks first-class status nonetheless can flash while your hand quickens. Something that feels take care of at some stage in exercise can loosen moderately whilst your epidermis gets warmer.

I even have found out to examine more healthy in three methods: when my hands are dry, whilst they may be somewhat sweaty, and when I am worn-out. Fatigue topics. Your grip alterations. Your muscular tissues tighten. Your circulate becomes less special. A amazing concealment accessory holds up lower than that actuality.

When buying in a magic trick store, spend time at the small specifications that many times get skimmed. Fit differ, materials form, and the way the product is designed to attach or sit. If the item is supposed for repeated perform, you have to be capable of use it for months with no it growing stiff or slipping. If it best works for a brief dash, it might still be all right for a one-off gig, yet it would frustrate you when you operate most of the time.

## Stage and venue realities: lighting fixtures, target market distance, and sound

Even the premier accessory can fail once you forget about the ecosystem.



Stage lighting can show seams, edges, and overly reflective surfaces. Audience distance differences how much element audience can see. Close-up lights differences how your prop textures study. And sound can betray timing. A gimmick that makes a delicate friction squeak will become a noisy dilemma in a quiet room.

Accessories can help, yet only in case you opt for them for the performance context. For example, some performers want much less reflective supplies for level paintings. Others prioritize touch and management over visibility in view that their presentation attitude reduces exposure.

If you do the two shut-up and stage, it supports to care for two "editions" of distinctive components: one tuned for digicam-friendly aspect and one tuned for velocity and durability.

That may be why buying thoughtfully from a magic retailer united kingdom topics. The biggest outlets notice that performers do now not carry out in one placing. They want possibilities that fit different environments with out forcing you to rebuild your kit every month.

## **Carrying and holding your equipment: storage is a part of the act**

A lot of performers deal with garage as a chore. Then they present up with a bag which is too vast, too flimsy, or too messy and spend the 1st 5 mins in their set are trying to find one merchandise.

A pro equipment setup comprises shipping safeguard and brief entry. Your components must be reachable without turning your returned to the target audience for too long. If you do a stroll-round set, you may also want booths that retailer props separated and steer clear of unintended mixing.

This could also be in which the selection of bag structure topics. A based case keeps items solid if you happen to stroll, whilst a versatile bag can shift and create delays. If you employ small gimmicks like clips, earrings, or specialized covers, you want compartments that cut down the risk of them getting beaten or stuck.

### **A compact "kit spine" approach**

Think of your package as having a spine: the one bag or case that all the time movements with you, plus a smaller accessory pouch inside it. The spine is your reliability. The inside of pouch is your quick-get right of entry to layer.

This method is rather really good for those who do journey or corporate gigs wherein you arrive temporarily, manage rapid, and will not come up with the money for to re-type the whole lot.

## **Accessories that increase your presentation, not simply your technique**

The target audience enjoy is shaped by greater than mechanics. Good accessories can escalate pacing, self belief, and clarity of story.

Consider such things as:

- props that fit your color palette and dress tones
- gimmicks that do not stand out while they're meant to disappear
- sporting instances that appear deliberate, now not such as you're rummaging for things

Even stage-protected lighting components, like small methods that lend a hand you manage convey cues, can support your efficiency pass. You won't consider them as "magic save pieces," however in the event that they guide your timing, they're part of the teach.

I additionally hinder hassle-free target market-pleasant extras. They should not flashy, but they control the moments in which actuality interrupts the script. A spare deck, a backup silk, a small roll of tape or adhesive putty that could tackle immediate fixes. You analyze quick that a tiny tear or a free seam can derail an entire sequence when you do no longer have a restoration possibility.

That isn't paranoia. That is professionalism.

## **How to make a selection add-ons from a magic trick retailer with no wasting money**

Buying from a magic trick shop should be would be could very well be a pleasure, however additionally it is hassle-free to overspend on pieces that don't event your workouts.

Here's how I make purchases that stick.

First, I think in phrases of "in which the accessory helps me most." If a prop saves time for the time of resets, it truly is well worth more than a prop that in simple terms increases visible enchantment. If an accent makes managing smoother, it really is price more than an accessory that basically supports with a single attitude.

Second, I review my so much basic efficiency circumstances. If I most of the time do shut-up in smaller rooms, I pick accessories tuned for subtlety and control. If I carry out more on level, I point of interest on sturdiness and visibility. If I do weddings or situations with variable lights and noise, I prioritize reliability and instant reset.

Third, I attempt the accessory early. A lot of performers wait except they sense "competent" to check. That is backwards. The past you attempt, the less in all likelihood you're to pick out a mismatch after a busy week of rehearsals.

Finally, I feel aid and compatibility. Some accessories are designed to work with precise methods or methods. If you forget about compatibility, the accessory can turned into a limitation rather than a solution. A perfect shop will normally have adequate detail that will help you suit objects in your needs, and it can be worth examining heavily earlier you assess out.

## **Pairing accessories with workouts: examples that coach real alternate-offs**

Accessories don't exist in a vacuum. Your preference adjustments your coping with, and your managing alterations what you need.

Here are some performer-model pairings that illustrate the business-offs.

If your shut-up recurring depends on repeated concealments, thumb covers and pocket reliability tools be counted more than novelty. You will suppose the receive advantages whenever you succeed in right into a pocket and every time your hand speeds up all through a vanish.

If your work incorporates material screens and rapid switches, silk garage and crease control become portion of the movements. A silk this is stored nicely and folded lightly can experience smoother all the way through managing and reduce the ones moments in which a fold exhibits with the aid of.

If you do card work as a rule, card renovation and deck consistency count number extra than you can assume. A deck that maintains its stiffness and surface finish makes coping with repeatable, and

repeatability is what audiences believe even if they won't provide an explanation for why a specific thing "seems to be off" approximately your overall performance.

And if you happen to function in venues with unpredictable acoustics, sound-touchy components and careful subject material possible choices become quietly priceless. Sound isn't very just in the audience's ears, it is in your personal timing too. If your prop makes a noise at the inaccurate moment, you sense it and your arms adjust, sometimes devoid of you figuring out.

## The components I'd prioritize if I were construction a brand new package today

If I had to rebuild my performance package from scratch with a focus on useful impact, I may prioritize the components that reinforce reliability first, aesthetics second. That is how you continue your instruct sturdy throughout totally different venues.

I could start with a basis for managing convenience (gloves or finger management aids appropriate on your routines), then construct out concealment reliability (thumb covers, pocket business enterprise, and storage that continues props in the appropriate position). After that, I may invest within the small however predominant "overall performance-grade" products for the exercises I repeat maximum, like card preservation and coin floor concerns.



Then I may circular out the kit with cloth strengthen and restoration recommendations, as a result of cloth paintings and genuine-international situations usually find a way to test you.

This means may not appear as flashy as including ten new gimmicks, however it more often than not ends in more beneficial performances faster. When your equipment behaves, you spend less vitality managing variables and more energy construction rhythm and individual.

## Getting the most useful out of your magic save UK purchases

Once you purchase components, the real cost reveals up while you integrate them into follow.

A quick but valuable apply behavior is to run "accessory-basically drills" for the items you operate under stress. If you war with a transition, drill the transition. If your thumb [magic shop](#) covers sometimes shift, drill concealment and retrieval with specific pacing. If a silk creases too sharply, scan with folding and garage and rehearse the moment you install it.

Accessories aren't magic via themselves, yet they may be what make magic believe hassle-free. That is what separates a lovely trick from a resounding functionality.

And should you retailer a magic store UK that knows performers, you should not simply amassing items. You are constructing a toolkit that respects a while and protects your self belief.

If you want to browse with motive, attitude it like you'd practice session. Identify your leading three workouts, notice which moments sense weakest, then seek equipment that instantly get rid of the ones weaknesses. That is the quickest path from "I received this" to "this belongs in my reveal."

## **A remaining suggestion on "most well known": it depends on the way you perform**

The easiest accent isn't very frequent. The excellent accent is the single that fits your coping with, your costume, your venue realities, and your present pacing.

A magic trick keep can stock numerous massive tools, but your task as a performer is to determine the tools that makes your events less difficult to execute beneath tension. When that occurs, your paintings begins to feel cleaner. Your timing tightens. Your target audience relaxes given that your activities seem to be managed, now not improvised.

That is the actual win.

If you inform me what variety you function such a lot (close-up, degree, youngster-friendly, stroll-around) and which routines you rely on, I can counsel accent categories to prioritize from a regular magic keep UK selection, devoid of pushing anything else unnecessary.