

Counter-Strike: Global Offensive (CS: GO) has become a cultural phenomenon within the esports community, and among its most enduring features is the case-opening system. By opening a virtual case, players acquire ornamental weapon skins that can be used in-game or traded on the Steam Community Market. This guide checks out how the system works, the odds behind each rarity tier, the economics of popular cases, and responsible practices for players who select to engage with this mechanic.

1. What Is a CS: GO Case?

A CS: GO case is a digital loot box that consists of a random weapon skin. Each case is coupled with a distinct key that needs to be purchased (or in some cases earned through operations) [View website](#) to open it. The contents are determined by a random number generator (RNG) that appoints a rarity tier and after that chooses a specific skin within that tier.

The case-opening mechanic serves three primary functions:

- **Cosmetic modification**-- Skins enable players to individualize their load-out.
- **Economy**-- Certain skins, especially uncommon ones, can be offered for real-world money on external marketplaces.
- **Engagement**-- The unforeseeable nature of the drop creates a "chase" incentive that keeps the in-game economy dynamic.

2. How the Opening Process Works

When a gamer selects a case and a matching secret, the following actions take place:

1. **Case selection**-- The gamer opens the "Inventory" tab and picks a case (e.g., The **Gamma Case**).
2. **Secret acquisition**-- The gamer buys a key from the in-game store or obtains one through an operation.
3. **Initiation**-- Clicking "Open" triggers the animation, during which the RNG figures out the outcome.
4. **Expose**-- The last screen shows the obtained skin, its rarity, and its condition (Factory New, Field-Tested, and so on).

The entire process is rapid on the server side; the visual animation is purely for gamer home entertainment.

3. Rarity Tiers and Drop Odds

Each case contains 5 rarity tiers, each with an appointed probability. The following table illustrates the approximate drop opportunities for a basic case such as the **Chroma Case**.

Rarity Tier (Colour)	Example Skins	Approximate Drop Chance
Mil-Spec (Blue)	Pistols, SMGs	79.92%
Restricted (Purple)	Assault rifles, shotguns	15.98%
Classified (Pink)	Rifles, submachine guns	3.20%
Covert (Red)	High-tier rifles	0.80%
Rare Special Item (Gold)	knives, gloves	0.10%

Note: The precise percentages can differ slightly from one case to another, however the hierarchy stays consistent.

4. Popular Cases and Their Market Values

Below is a table of some of the most regularly opened cases, their release years, average essential cost (since 2023), and common market price of the rarest item they can yield.

Case Name	Release Year	Approx. Key Price (GBP)	Highest-Value Drop (Typical)
The Gamma Case	2016	£ 2.50	Gamma Doppler (Knife)-- £ 300-- £ 1,200
The Revolver Case	2016	£ 2.50	Crimson Web (Knife)-- £ 250-- £ 800
The Glove Case	2019	£ 3.00	Pandora's Box (Glove)-- £ 150-- £ 600
The Danger Zone Case	2018	£ 2.75	Forest DDPs (Knife)-- £ 200-- £ 700
The Operation Broken Fang Case	2020	£ 2.50	Fade (Knife)-- £ 400-- £ 1,500

Costs fluctuate continuously due to market demand, seasonal events, and the intro of brand-new cases.

5. Strategies and Responsible Practices

5.1. Why Players Choose to Open Cases

- **Entertainment**-- The excitement of a prospective unusual drop can be more amazing than merely acquiring a skin straight.
- **Earnings Potential**-- Occasionally, a gamer might acquire a high-value skin that can be sold for revenue.

5.2. Tips for a Positive Experience

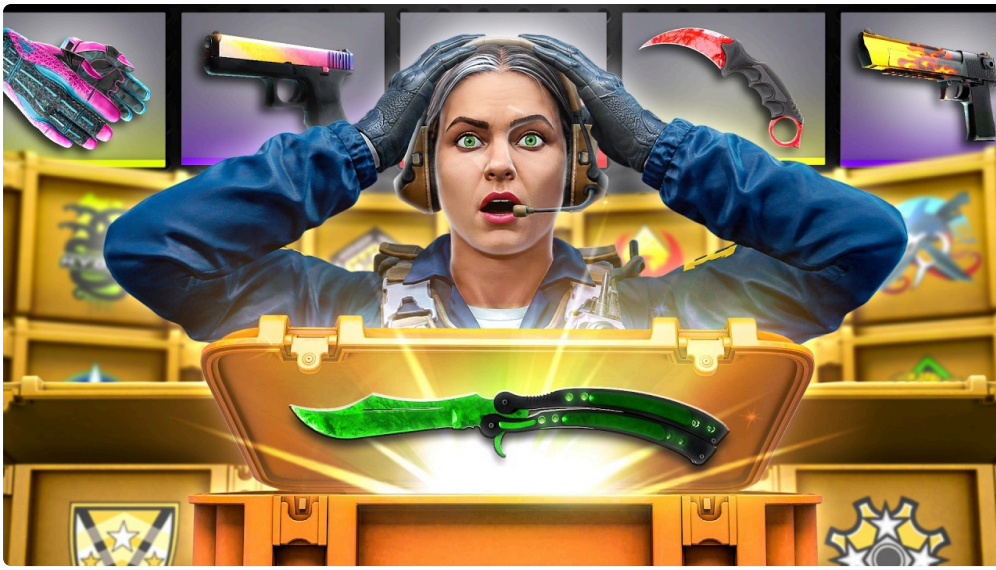
- **Set a Budget**-- Decide ahead of time just how much cash can be invested in secrets and stay with that limit.
- **Understand the Odds**-- Recognize that the chance of getting a Covert or Rare product is really low; most opened products will be Mil-Spec or Restricted.
- **Treat It as Entertainment**-- Approach case opening as a kind of recreation, similar to buying a lottery game ticket, rather than an investment technique.
- **Avoid Chasing Losses**-- If a session does not yield the wanted skin, withstand the urge to keep buying more secrets in an attempt to recover losses.

5.3. Legal and Ethical Considerations

In many jurisdictions, loot boxes are classified as gaming, and some nations have actually enacted regulations needing disclosure of chances or restricting their sale to minors. Gamers ought to be aware of regional laws and the policies of the platform they are using.

6. Step-by-Step: Opening a Case

Below is a numbered list that lays out the normal workflow for opening a case in CS: GO.



1. **Visit to the Steam client** and launch CS: GO.
2. Browse to the **"Inventory"** tab and find the "Cases" section.
3. Select the desired case (e.g., **Gamma Case**).
4. Purchase a matching secret from the in-game shop or utilize a key obtained through an operation.
5. Click the **"Open"** button to start the opening animation.
6. Wait on the RNG to solve; the screen will show the obtained skin and its rarity.
7. The skin is contributed to your stock; you can keep it, equip it, or list it on the Steam Community Market.

7. Frequently Asked Questions (FAQ)

Question **Is opening a CS: GO case considered gaming?** The mechanic is a loot box, which numerous regulative bodies categorize as a kind of betting. Players ought to check their regional laws and the regards to service of the platform. **Can I pick which skin I will get?** No. The result is determined totally by a random number generator; there is no way to affect or forecast the precise skin. **How much does a typical key cost?** Most standard keys are priced at roughly **£ 2.50 GBP** on the Steam Market, though costs can vary throughout special occasions. **What takes place if I open a Rare Special Item (Gold)?** These products (often knives or gloves) are the most valuable. They can be offered for real-world money on third-party markets, though the deal needs to comply with Steam's regards to service. **Are the odds the exact same for every single case?** The odds follow the same five-tier hierarchy, however the precise portions might vary a little between cases. The percentages shown above are representative of the majority of standard cases. **Can I get a replicate skin?** Yes. If you currently own a skin, the replicate can be "recycled" for a small quantity of Steam credit, but the procedure does not grant extra worth. **Is it possible to get a specific rarity on the first shot?** The RNG is independent for each opening, so the chance of any rarity remains consistent no matter previous openings.

8. Conclusion

CS: GO case opening remains a main part of the game's cosmetic economy, using both visual modification and the excitement of a potential uncommon drop. By comprehending the underlying odds, the marketplace dynamics of popular cases, and the importance of responsible spending, players can engage with this feature in a manner that enhances their experience without causing negative monetary repercussions.

Whether a gamer selects to open a case for enjoyable, to chase a desired knife, or just to add a brand-new skin to their collection, the key is to approach the procedure with clear expectations and a measured budget. As the

community continues to evolve, remaining informed will guarantee that the adventure of opening a case remains a satisfying element of the Counter-Strike experience.