

There's a particular quite audience hush that takes place desirable in the past a flash consequence hits. Not silence exactly, greater like every body's recognition tightens at the same time, the way a room listens whilst a door clicks close. If you've ever run a live express, you realize the sensation. The moment will likely be small in time, yet it's substantial in final result: the cue will have to land cleanly, the performer desires self belief, and the workforce wishes repeatable reliability.

That's the place flash merchandise and, peculiarly, flash paper come in. Used effectively, they give a vibrant burst that reads onstage with no need a long visible lead-up. Used carelessly, they may be able to turn into a protection main issue or a reliability headache. The change is inside the facts: the way you level the cue, the way you handle the textile, what you count on to appear, and what you do while it doesn't.

Below is how I consider these effects in true manufacturing terms, the business-offs I've observed, and the useful alternatives that continue indicates moving.

What "flash" sincerely capability in a theatrical cue

People talk approximately "flash" like it's one thing, but in performance work it's more commonly a mix of variables.

Brightness is the apparent one, yet there's also duration, structure, and the behavior of the flame. Flash paper has a tendency to burn super directly and with a dramatic flare. Other flash items may well be designed to create a burst, spark, or flame-like influence with other burn patterns. Even while two merchandise are described as "flash," they could produce one of a kind visuals at the different distances, beneath diversified degree lighting, and with varied performer angles.

I've watched a cue look wonderful for the period of tech, merely to appearance flatter at curtain considering the fact that the performer ended up quite further from the downstage mark, or the persist with-spot changed. Flash consequences are touchy. They are also fair: if anything is off with your setup, the target market can feel it on the grounds that the impact is meant to be instantaneous and crisp.

That's why the "appearance" is in simple terms half of the tale. The other part is timing and handling.

Flash paper: the vintage, and why it nonetheless works

Flash paper stays everyday for a intent: it's visually legible from a distance, it travels effectively whilst safely packaged, and it's reasonably trouble-free to integrate into certain magician-type routines and fast theatrical moments.

The purposeful allure onstage is that you just typically don't need a large prop in view. A small piece can create a solid hit, extraordinarily while the heritage is darkish or whilst the impact is framed by way of a managed lights moment. If your reveal has a deliberate "freeze" or a beat in which the viewers anticipates effect, flash paper can experience that vigour fantastically.

That reported, flash paper is simply not just "paper that flashes." It's a flammable drapery that behaves in a different way relying on:

- how dry it is
- how it's held or positioned
- airflow round it

- even if any oils, mud, or residues contaminate the surface
- how swiftly it's uncovered in the time of the cue

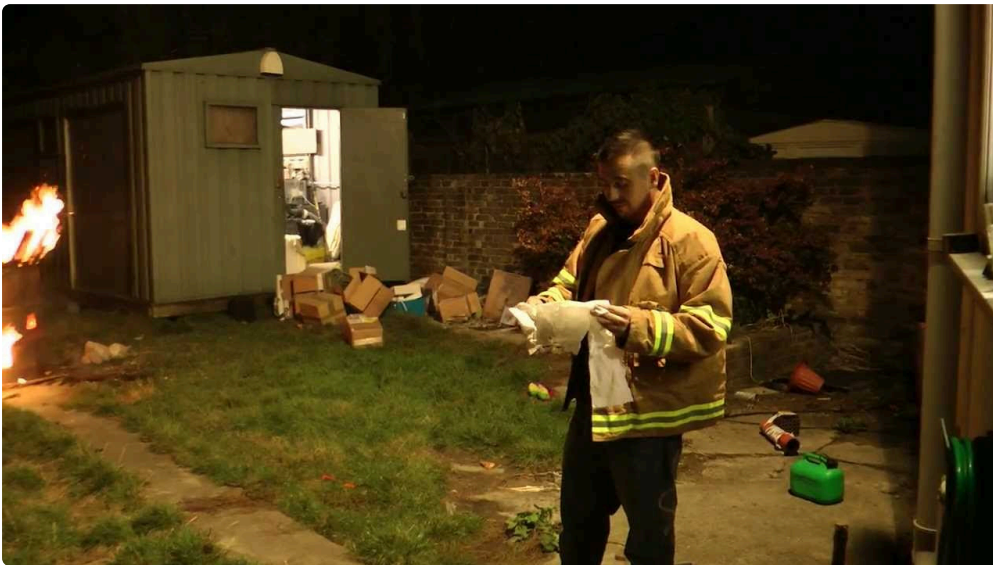
In practice session, I deal with flash paper like a timing tool. I'm now not just checking out the performer's choreography, I'm checking out the stipulations that govern the burn. Even a sophisticated big difference in how a prop is prepped can swap how the burst reads.

Safety and compliance: the unglamorous edge that saves shows

I'm going to be direct the following, for the reason that flash outcomes don't forgive shortcuts. You must deal with flash items and flash paper as regulated constituents on your jurisdiction, and stick with the corporation guidance precisely. If you're operating in a venue with a dwell defense workplace, suppose you need approvals, garage directions, and an operator plan.

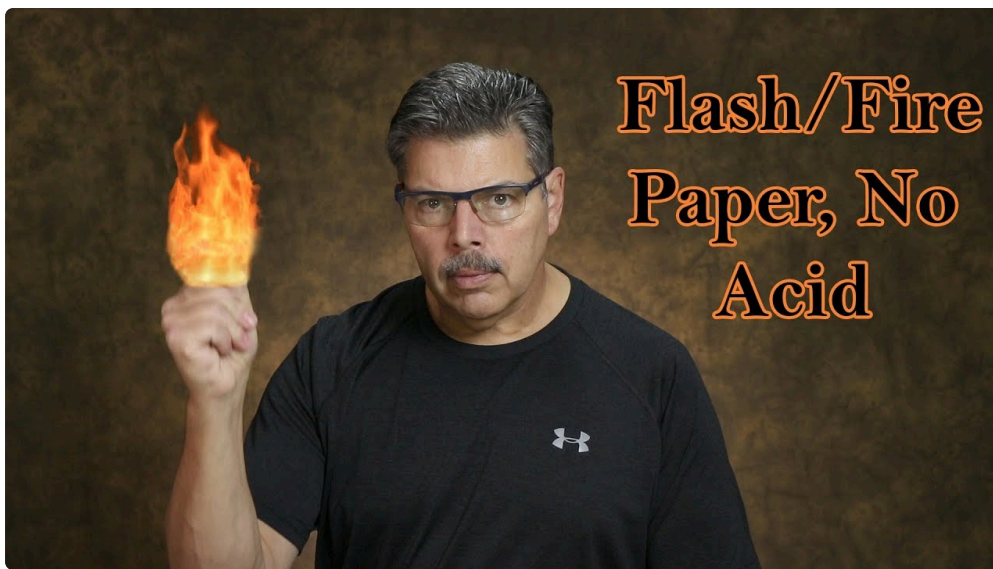
From a construction point of view, the defense workflow veritably involves three layers:

- 1) permissions and paperwork
- 2) controlled storage and handling
- 3) execution laws for the cue



The suitable requirements vary extensively, so I won't fake there's one customary list that suits every venue. What does continue to be consistent is the mindset: no improvising with ignition techniques, no blending items, no guessing. If the product training specify how it should always be staged, you level it that means.

If you're development a reveal round flash paper, additionally plan for what takes place if some thing misfires. In live performance, "rare" is not really almost like "very unlikely," and the group desires a explained reaction.



Picking the excellent flash merchandise for the job

Not all flash resultseasily are interchangeable. When I'm choosing flash merchandise, I start off by way of asking what the viewers must understand in less than a 2d. Do you wish a bright, flare-like pop? A greater full of life burst? Something that looks like sparks in preference to a flame?

Then I look at the restrictions:

- distance to digicam or seats
- visibility of the prop zone onstage
- the performer's proximity to the outcome
- whether the final result wishes to be seen at a strict attitude
- regardless of whether the prop might be concealed or will have to be seen
- how the cue chain is triggered (guide, far flung, or built-in right into a habitual)

The "exact" selection is primarily the one that produces a constant end result underneath your express's lighting and staging circumstances, now not the single that looks best suited in a demo video.

A rapid anecdote: I as soon as saw a crew opt a flash product as it photographed neatly in uncontrolled checking out. In the theater, the background lighting changed into brighter than estimated, and the impression lost evaluation. The repair was now not a lighting fixtures miracle, it become switching to a flash alternative that gave a improved differentiation on the meant sightlines. That determination saved either the appear and the confidence of the performer.

Cue layout: how flash effortlessly prevail onstage

A flash cue is choreography plus engineering. The viewers thinks it's magic, but the level supervisor thinks in terms of timing windows, workforce positions, and who is allowed to do what at which second.

Staging for visibility

Flash works finest while the impact has assessment. If your history is simply too bright, the burst can emerge as a vivid blur rather than a crisp hit. You don't always desire darkish phases all of the time, yet you need a second in which the flash has somewhere to stand visually.

Also be conscious of angles. A flash can glance sturdy from one facet and weak from an alternative. In an average venue, there's at all times in any case one "useless perspective" created with the aid of sightlines, railings, or lighting fixtures positions. Tech rehearsal is when you locate these. If you merely cost from the lighting console and now not from the seats, you're playing.

Timing home windows and motion

Flash paper cues most often involve a action: a display, a snap, a boost, a release. The cue has to align with the physique situation that keeps the prop stable. If the performer is moving too much, the outcome can scatter or gift another way than rehearsed.

In prepare, I goal for two timing layers: the performer's inside beat (their body timing) and the cue timing (the instant ignition takes place). If these layers go with the flow, the final result can suppose past due or out of person, even supposing it's technically on time.

Lighting and digital camera considerations

If your construction incorporates cameras, flash effects can behave like a lighting fixtures switch. Some cameras exaggerate brightness, others blow out highlights, and a few cause computerized exposure shifts that linger for a beat. That can have effects on not simply the flash second yet next photographs.

If filming is component of your plan, coordinate it early. I've viewed enhancing headaches appear simply because the flash burned effective, but the digicam settings created a publish-flash exposure dip that made the following scene experience underexposed.

Handling and rehearsal: the small stuff that matters

Flash paper is sensitive to how it's treated, and flash merchandise fluctuate by way of design. Even when you have the fitting materials, that you can still lose consistency in the event that your system is sloppy.

A suitable rehearsal means is to deal with coping with as a ritual. Assign one or two knowledgeable those who set up prep and storage. Have a regular workflow for a way the paper is reduce, folded, staged in a prop, and guarded from contaminants.

Here are the sensible issues I focal point on:

- Keep the flash paper dry and saved according to manufacturer practise. Humidity alterations conduct.
- Handle with blank, dry gloves or regardless of the guidance advocate. Skin oils depend extra than other people are expecting.
- Avoid touching the burn surface extra than mandatory.
- Prepare in a managed spot, not top beside fog machines, filth, or heavy foot visitors.
- Mark props simply and hinder duplicates separated so nothing receives combined up among cues.

Rehearsal is usually the time to decide what you're going to do with partial disasters. With any combustion-founded outcomes, you can get a susceptible flare, a partial burn, or a lingering ember relying on setup. You desire a plan for a way the performer continues and how the team resets accurately.

A trouble-free resolution framework earlier than you buy or build

If you're gaining knowledge of flash products for a tutor, don't soar with the so much dramatic option. Start with the instruct's necessities. That mind-set helps to keep budgets and defense approvals underneath

manipulate.

Here's the five-edge framework I use with customers and inside groups:

1. **Define the onstage promise:** what the viewers ought to see and really feel, throughout the time window of the cue.
2. **Lock the sightlines:** the place the target market is relative to the impact, and what history lighting fixtures might be doing at that second.
3. **Match managing for your performer:** can they supply the cue cleanly with out hazardous proximity or awkward motion?
4. **Align ignition technique with your creation reality:** guide, managed, far flung, or integrated, dependent on what your staff can execute reliably.
5. **Plan for reset and failure modes:** what takes place if the end result is susceptible, partial, or delayed, and the way you keep harmful re-attempts.

If you can actually reply those truly, the product determination turns into much more uncomplicated.

Common production pitfalls (and how you can stay away from them)

Flash outcomes [Flash Products](#) are fascinating, so groups normally get tunnel vision. The influence might possibly be wonderful in practice session and fragile on performance night. The pitfalls are on the whole predictable.

One ordinary aspect is inconsistent prep. If unique americans prep the paper or prop, or if prep happens in assorted destinations, you lose the managed circumstances the influence desires.

Another pitfall is cue compression. Flash effects feel on the spot, so it's tempting to tighten timing past what the performer can physically guarantee. I've found out that just a little respiration room within the choreography generally makes the end result learn cleanser and reduces "rushed" movement that impacts how the paper ignites or presents.

Finally, there's the catch of assuming ignition equals the visual effect. Ignition is simply the start. The visual is fashioned by using burn conduct and degree circumstances. You should still usually experiment under your show lighting, now not just less than a neutral retailer light.

Integrating flash paper into level magic and theatrical scenes

Flash paper is renowned in stage magic because it creates have an impact on with minimal physical bulk. But theater will not be in basic terms magic tricks. It's additionally story beats. When I integrate flash paper right into a theatrical scene, I deal with it like punctuation as opposed to a fireworks finale.

That can mean the usage of it to sign transformation, divulge a hidden object, mark the climax of a personality's selection, or punctuate a valid cue it truly is already customary.

The secret is that the end result could serve the narrative logic of the instant, not just the brightness. If the train's tone is suspenseful, the outcome's timing deserve to be synchronized with suspense instead of performing as a jump-scare. If the reveal is comedic, the flash will probably be used as a beat that lands true after a deadpan pause.

When performers have that clarity, they tackle the prop with less hesitation, which improves the reliability of the flash paper cue.

Storage, labeling, and team coordination

Flash products and flash paper must always now not be taken care of like prevalent props you would toss right into a grab bag. In my enjoy, the maximum efficient displays run a easy labeling and staging components.

Even if your venue is casual, your inside service provider must be strict. I label props by means of cue and performer, retailer them the place they gained't be uncovered to moisture or contamination, and continue a reset part it really is break free everyday stroll-on zones. That separation reduces unintended touch and hurries up cue readiness.

Crew coordination topics too. If any individual rather than the cue operator handles the reset or clearing approach, you need to exercise roles truly. People ought to comprehend where to face, what not to touch, and methods to keep up a correspondence while the cue is risk-free to continue.

Lighting hints that make flash effortlessly appearance better

You can't fake a flash with lighting fixtures, but it is easy to make it seem more intentional.

A few reasonable procedures I've used:

- **Use transient assessment changes:** dimming or adjusting background intensity simply in the past the cue is helping the burst study certainly.
- **Avoid glare at the performer:** if the performer's hand is too brightly lit, the target market can even point of interest on the mechanics rather than the magic.
- **Watch for mirrored image surfaces:** glossy floors, acrylic panels, or designated cloth cabinet materials can reflect the burst in distracting approaches.

If you're working with flash paper, additionally take into account the prop's silhouette. A predictable silhouette improves the feel of timing and reduces "what is that?" moments. The audience shouldn't need further milliseconds to fully grasp what they're having a look at.

Rehearsal testing: a way to run it so you research fast

You can't fantastic flash effortlessly with one tech run. You need managed trial habit, the kind that shows how the influence behaves to your stage.

I like to check the cue in a small set of conditions:

- your default stage lighting
- an trade history depth (brighter and dimmer)
- the performer at the meant mark, and then at one or two close by marks to work out how delicate the impression is to distance
- a "gradual" practice session to examine movement alignment, then a run at overall performance pace

You're attempting to find consistency, now not most flash. If it varies wildly across rehearsals, the answer can be prop managing, staging role, cue timing, or the flash paper training formula.

When you do discover a sturdy configuration, lock it and safeguard it. The best approach to wreck a sturdy cue is to exchange something small and suppose it won't depend.

Performer confidence is component of the effect

Audiences see the cue, however performers lift the dangers. Confidence influences execution, and execution impacts visible end result.

If a performer feels not sure, they will tighten their grip, hesitate mid-movement, or alter body positioning. With combustion-based mostly resulteasily, those micro ameliorations can have an affect on how the flash paper behaves. The staff will probably be well suited, the cue would be on time, and the outcomes nevertheless comes out fallacious if the performer's dealing with shifts.

So it's worthy investing time in practice session field: the identical grip, the equal movement route, the related cue beat. It's now not overthinking, it's building muscle reminiscence round an result that has a narrow timing window and a particular burn habit.

When flash paper will never be the ultimate option

Sometimes you desire the influence, however flash paper isn't the right tool. If your scene calls for improved flame, a protracted spark path, or an overly special form, you can still want different flash items designed for that conduct.

Also think about venue constraints. Some venues have regulations on combustion resources, or restrained potential to manipulate smoke and cleanup. Even in case your effect is allowed, the practical have an impact on may well outweigh the visual praise.

In the ones cases, a completely different attitude could provide a comparable viewers trip with much less operational menace. The level just isn't to drive flash paper into each convey, it's to decide upon the effect that matches the story beat and the production constraints.

Practical checklist for cue day (one group's means)

1. Confirm cue collection and who is chargeable for each action, with transparent move/no-pass communicate.
2. Verify degree marks and lights states tournament rehearsal prerequisites as carefully as you can actually.
3. Inspect props for proper labeling and real instruction components, utilising the similar coping with regulations as practice session.
4. Ensure the performer's motion trail is obvious and there are no new obstructions or slip disadvantages.
5. Run a closing protection payment per venue processes, then execute the cue with out improvisation.

That record is brief on intention. On cue day, the biggest hazard is letting small task steps waft lower than time rigidity.

Final innovations on riding flash merchandise responsibly and effectively

Flash paper is one of these theatrical gear that feels essentially unfairly dramatic as compared to its actual size. That's precisely why it really works. A vivid burst may well be humorous, eerie, effective, or magical, depending on context and timing.

But the authentic craft is behind the scenes: determining the top flash items to your lighting fixtures and sightlines, rehearsing the coping with until it's repeatable, and building a safe practices mind-set that covers luck and failure.

When you get the ones pieces aligned, the viewers doesn't simply see a flash. They think the precision at the back of it. And that's while the magic lands.